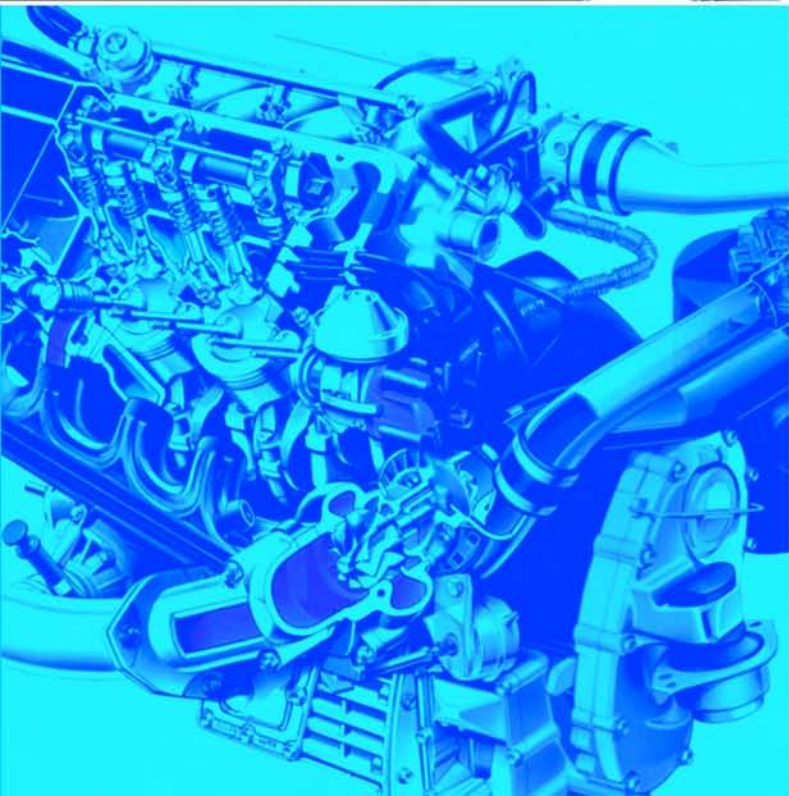
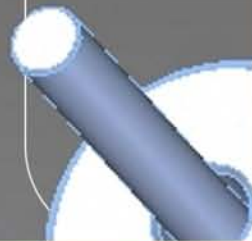
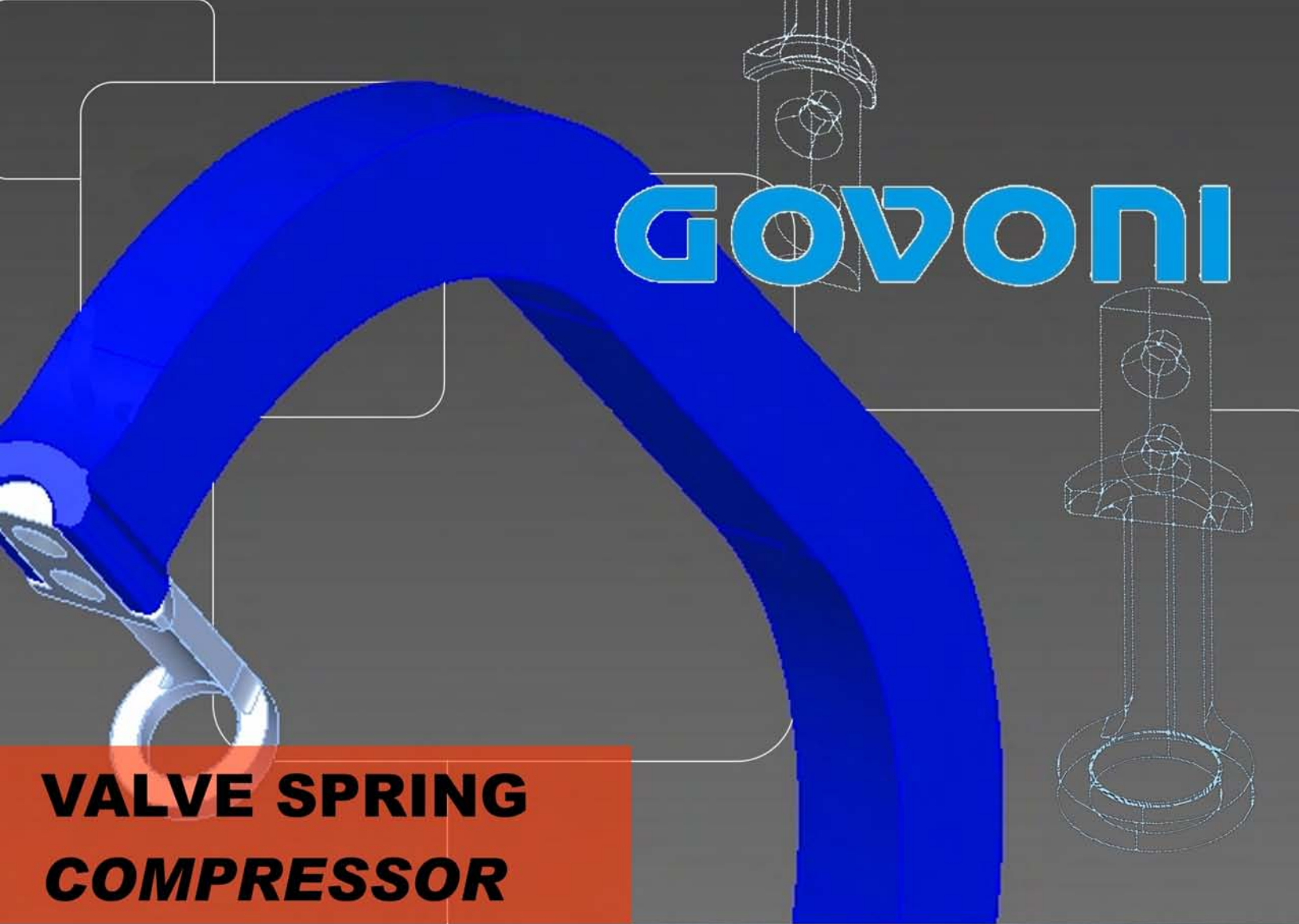


GOVONI

VALVE SPRING COMPRESSOR



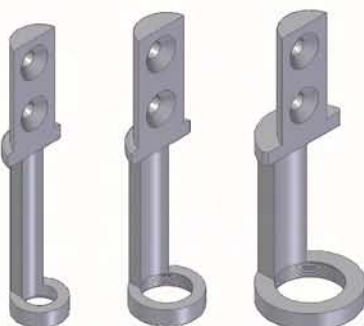
VALVE SPRING COMPRESSOR STANDARD VERSION

New!

Air operated Valve Spring Compressor



New pressure feet



Mod. 315 020 000

Attrezzo pneumatico universale per smontaggio e montaggio valvole motori, realizzato per lo smontaggio e montaggio di tutti i tipi di valvole su motori a scoppio e diesel.




Per la sua semplicità e praticità d'uso permette di ottenere un risparmio di tempo del 60-70% specialmente in fase di montaggio delle valvole.
COSTRUITO APPOSITAMENTE PER MOTORI CON 4/5 VALVOLE PER CILINDRO

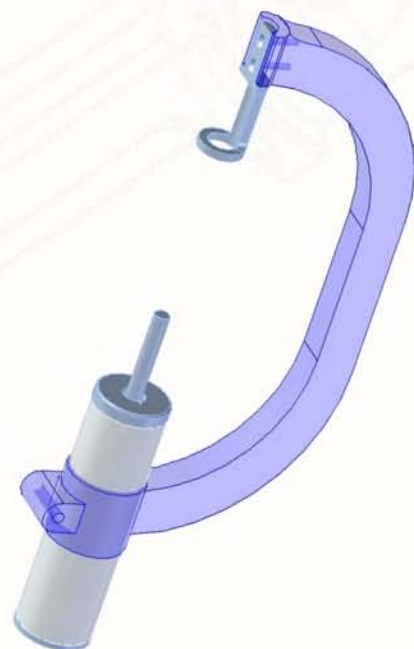
Universal pneumatic tool for assembling and disassembling engine valves, suitable for all types of valves on petrol and diesel engines.

Practical, and easy to use, it permits time savings of up to 60-70%, especially during valve assembly.

APPOSITELY MADE FOR ENGINES WITH 4/5 VALVES PER CYLINDER

Pressione/Pressure	Spinta max. / Force Max
6 bar	75 kg.
8 bar	100 kg.

			
Codice Code	315 020 002	315 020 003	315 020 006
Descrizione accessori	Estrattore d.25,5 con boccole 5 misure: 24,5-25-27-29-32 mm.	Kit estrattore d. 34 con boccole 3 misure: 34-41-50 mm.	Estrattore valvole d.19,8 mm.
Accessories description	Pressure foot d.25,5 mm. with 5 adaptors: 24,5-25-27-29-32 mm.	Pressure foot d.34 mm. with 3 adaptors: 34-41-50 mm.	Pressure foot d.19,8 mm.
Inclusi Included	•	•	•



VALVE SPRING COMPRESSOR HEAVY DUTY VERSION

Mod. 315 021 000

Attrezzo pneumatico universale per smontaggio e montaggio valvole motori, realizzato per lo smontaggio e montaggio di tutti i tipi di valvole su motori a scoppio e diesel.

Per la sua semplicità e praticità d'uso permette di ottenere un risparmio di tempo del 60-70% specialmente in fase di montaggio delle valvole.

COSTRUITO APPOSITAMENTE PER MOTORI CON 4/5 VALVOLE PER CILINDRO

Universal pneumatic tool for assembling and disassembling engine valves, suitable for all types of valves on petrol and diesel engines.

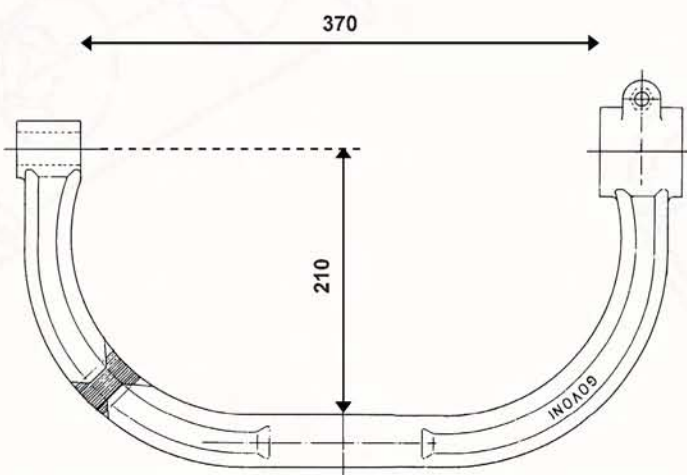
Practical, and easy to use, it permits time savings of up to 60-70%, especially during valve assembly.

APPOSITELY MADE FOR ENGINES WITH 4/5 VALVES PER CYLINDER



Pressione/Pressure	Spinta max. / Force Max
6 bar	118 kg.
8 bar	157 kg.

Preogettato per Veicoli Commerciali, Camion, Caterpillar, Motori Speciali
Designed for Commercial Vehicles, Trucks, Caterpillars, Special Engines



Codice Code	315 020 002	315 020 003	315 020 006
Descrizione accessori	Estrattore d.25,5 con boccole 5 misure: 24,5-25-27-29-32 mm.	Kit estrattore d. 34 con boccole 3 misure: 34-41-50 mm.	Estrattore valvole d.19,8 mm.
Accessories description	Pressure foot d.25,5 mm. with 5 adaptors: 24,5-25-27-29-32 mm.	Pressure foot d.34 mm. with 3 adaptors: 34-41-50 mm.	Pressure foot d.19,8 mm.
Inclusi Included	•	•	•

Disassembly



Assembly



GOVONI

www.govoni.it

 **LUBRITEK**

www.lubritek.it

Via degli Orsi, n. 97

40014 Loc. Beni Comunali

Crevalcore (BO) Italy

Tel: + 39 . 051 . 98 26 88

Tel: + 39 . 051 . 98 07 98

Fax: + 39 . 051 . 68 01 371

E-mail: info@govoni.it

customersevice@govoni.it